

GH
943805660

STANDARD CRANES

Lifting
your
world.



GH

15/15t

GH
CRANES & COMPONENTS



GHC
www.gnccranes.com

16

Contents

INTRODUCTION	4
BRIDGE CRANES	10
GANTRY CRANES	14
WALL TRAVELLING JIB CRANES	18
CRANES BY TYPE OF GIRDER	20
GIRDER TO END CARRIAGE CONNECTIONS	21
MOST COMMON ARRANGEMENTS	22
GH OPTIONALS	24
HIGHER PRODUCTIVITY	26
SAFETY DEVICES AND ACCESSORIES	27
INNOVATION AND FUTURE	28
GH GROUP	30



Standard cranes

MAXIMUM RELIABILITY LIFTING SOLUTIONS

At GH, our aim is to provide our customers with the SOLUTION required. Tailored to each customer.

Our machines are designed and built to be reliable and durable.

We always consider how to increase productivity, ensuring people's safety and the minimum environmental impact.

We have an international service network to guarantee original spare parts, and the necessary preventive and corrective maintenance when required so that our customers never stop.



PROXIMITY

To offer the best possible service, we believe it's important to be close to our customers, to the realities and the needs of their businesses.



QUALITY

We are committed to quality and innovative technological solutions.



PERSONALISED TOUCH

We are a team of individuals committed to premium products and services.





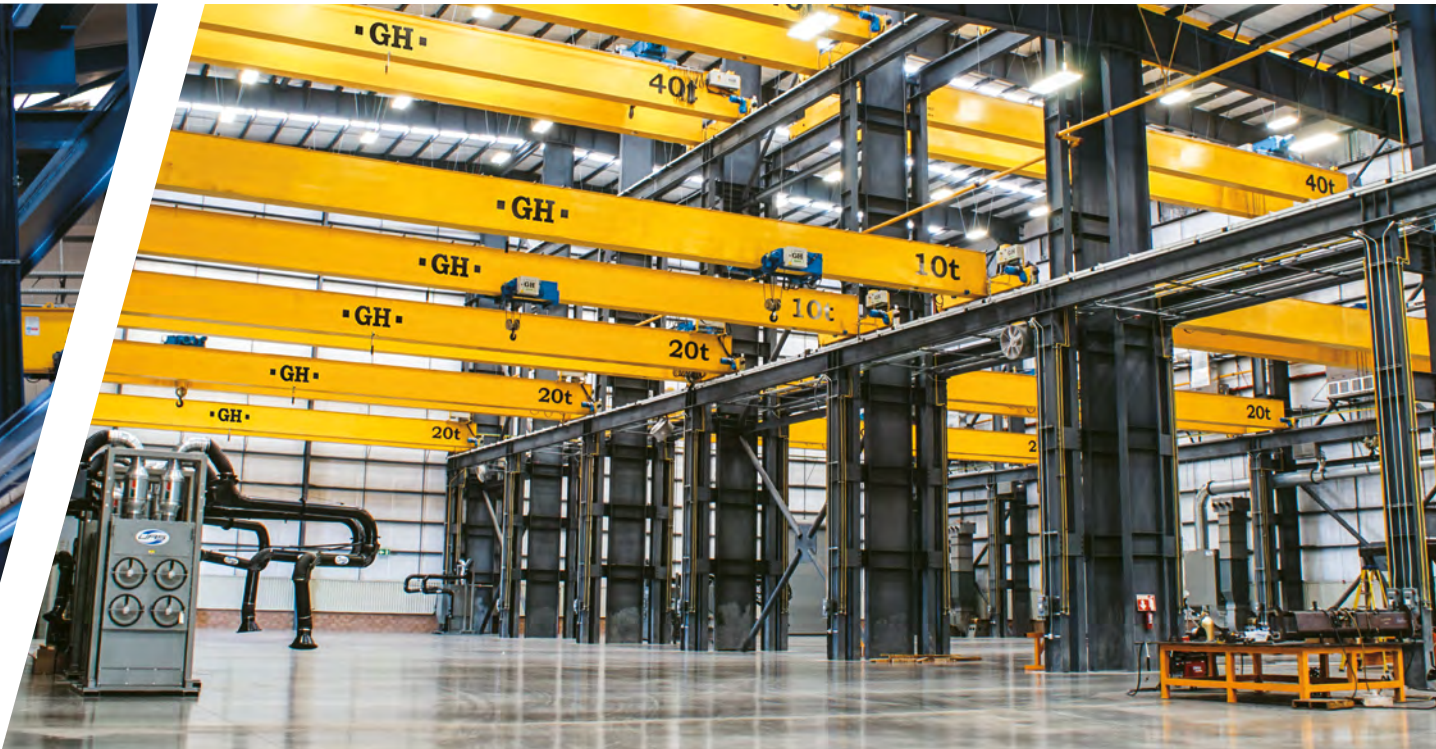
BRIDGE
cranes



GANTRY
cranes



WALL TRAVELLING JIB
cranes



65 YEARS DESIGNING AND MANUFACTURING CRANES



The commitment to being one step ahead has made us pioneers in the application of new technologies in the standard product.

Manufacturing the components ourselves allows us to innovate offering advantages to our customers in terms of cost, production and safety.

We are pioneers to include frequency inverters in all movements.

We have recently developed the COREBOX: GH's own intelligent control unit, which allows the crane operation to be monitored, even remotely.

Members of:



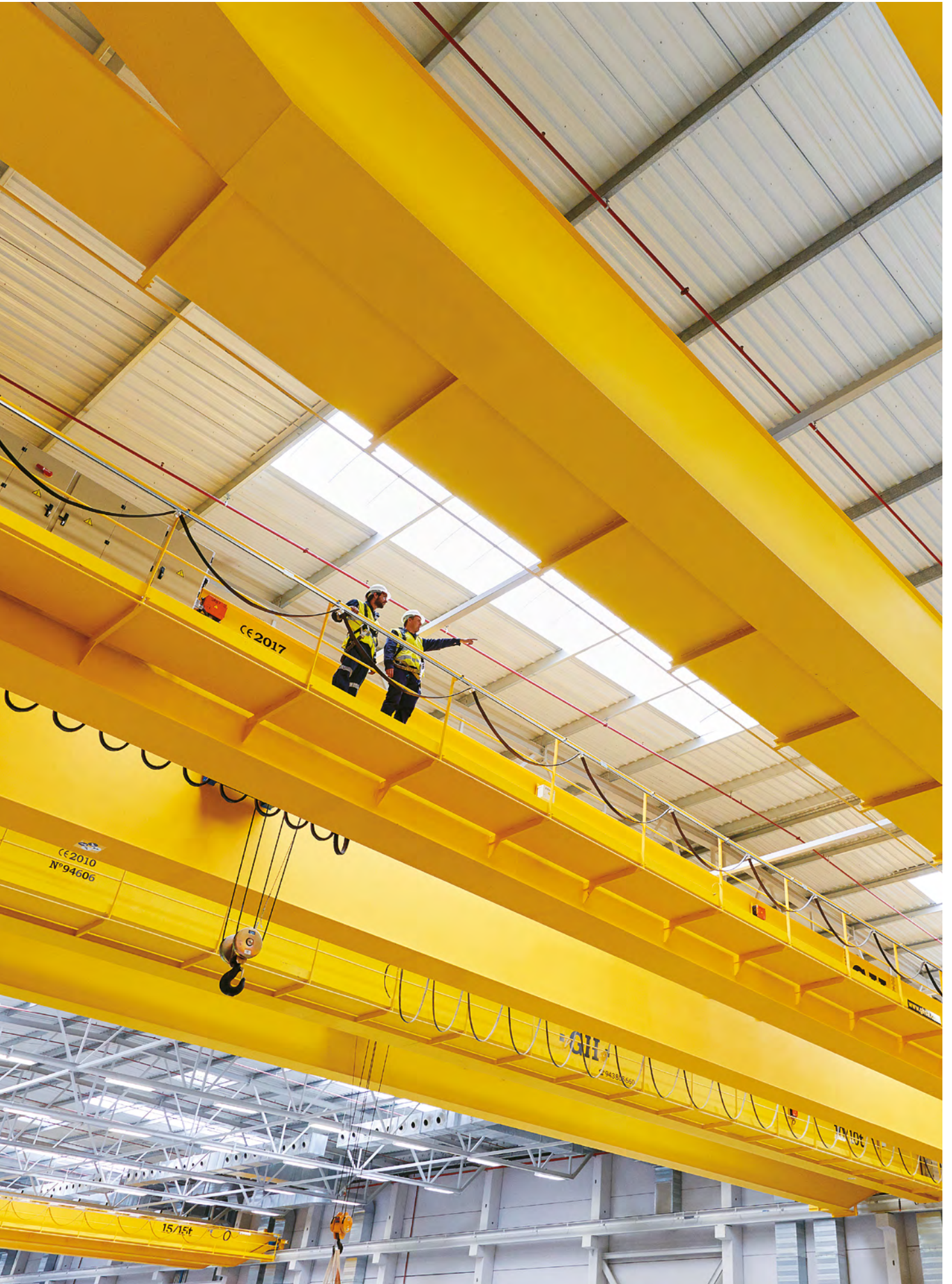
European
materials
handling
federation



CRANE MANUFACTURERS
ASSOCIATION OF AMERICA, INC.



中国重型机械工业协会
China Heavy Machinery Industry Association





THE DEMANDS OF OUR CUSTOMERS IS A GREAT MOTIVATION

Working for leading companies in different sectors is challenging, but gives us great satisfaction. Customers know better than anyone what they require: quick responses and efficient solutions. The fact that they put their trust in us is therefore the most convincing endorsement.

SOME OF THE CUSTOMERS WHO PUT THEIR TRUST IN GH

- ACCIONA
- ACERINOX
- ACEROMEX
- ACEROS AREQUIPA
- AÇOTEL
- AERIS ENERGY
- AIRBUS
- AKE INFRASTRUCTURE
- ALSTOM
- AQUALIA
- ARCELORMITTAL
- AUBERT & DUVAL
- AVIANCA
- BOUYGUES
- BREMBO
- BUDIMEX
- CAF
- CATERPILLAR
- CEMENGAL
- CHANTIERS DE L'ATLANTIQUE
- CIE AUTOMOTIVE
- COBERMETAL
- CODEME
- COMANSA
- COPACHISA
- COSENTINO
- DANFOSS
- DANOBAT
- DIAMOND C TRAILERS
- DOOSAN
- EAGLE RAIL CAR
- ELECNOR
- EMBRAER
- FAURECIA
- FIAT
- FINANZAUTO
- FCC
- FERROVIAL
- FUNDIFAS
- GAMESA
- GENERAL ELECTRIC
- GESTAMP
- GPI TANKS
- GUARDIAN GLASS
- HARBIN HAFEI AIRBUS COMPOSITE
- HEIMBACH
- HONGDU AVIATION
- HYUNDAI
- INDAR
- INTEGRITY TOOL & MOLD
- JIULI
- KOMATSU
- KONSORCJUM STALI
- LIEBHERR
- LLAXTA
- MAHINDRA
- METALS USA
- MOLDTECH
- MTU
- NAVANTIA
- NATIONAL OILWELL VARCO
- NISSAN
- NOVARES
- NORDEX
- NORTHEAST PRECAST
- OPTIMUS STEEL
- PICHON
- POWER ELECTRONICS
- RENFE
- RELIABLE REBAR
- RSTEEL FÁBRICA DE TUBOS METÁLICOS
- SAICA
- SAKANA
- SAMASZ
- SEAT
- SERMEFIT
- SIDERPERU
- SHIMIZU
- SHOUGANG
- SIAM CEMENT GROUP
- SIEMENS
- SOFIDEL
- STADLER RAIL
- STALPROFIL
- STECON
- TALGO
- TECNOARANDA
- TINDALL
- TRINITY INDUSTRIES
- VALE
- VOLVO
- WUTKOWSKI



Bridge cranes

These have a robust construction and a high level of standardisation. Very modular and adaptable to any need, with very reliable components and available for a wide range of applications.

The optimized combination of the crane structures with the mechanical equipment for lifting cross travelling and long travelling movements allow the maximum use of spaces.

Bridge cranes are divided into two groups according to their construction:

SINGLE GIRDER BRIDGE CRANES

The construction of standard cranes using a single girder makes them ideal for achieving the maximum use of spaces in combination with the new range of wire rope hoists, in addition to making them lighter.

DOUBLE GIRDER BRIDGE CRANES

For double girder cranes, calculation systems are used to adjust the weight and thus reduce the loads on the structure, offering greater stability for handling bulky loads.





OVERHEAD CRANES

The cranes travel supported on 2 rails.

The preferred solution for most customers.

Easy to integrate into the building structure.

The most suitable for high capacity cranes.



LIFTING CAPACITY:
SINGLE GIRDER 1 - 20 t
DOUBLE GIRDER 1 - 63 t



SPAN:
UP TO 39 m.

Other capacities and spans are available on request.

TWIN HOIST (up to 200 t)
and customised open winches (up to 400 t).

SINGLE GIRDER OVERHEAD CRANES



DOUBLE GIRDER OVERHEAD CRANES



SUSPENDED CRANES

These cranes run suspended from rails, generally built into the roof of the building.

It is a good option when there is no possibility of building a supporting structure for a top running crane.

It can have cantilevers to access difficult areas, and even carry out transfers of hoists between cranes.



LIFTING CAPACITY:
SINGLE GIRDER 1 - 20 t
DOUBLE GIRDER 1 - 20 t



SPAN:
UP TO 39 m.

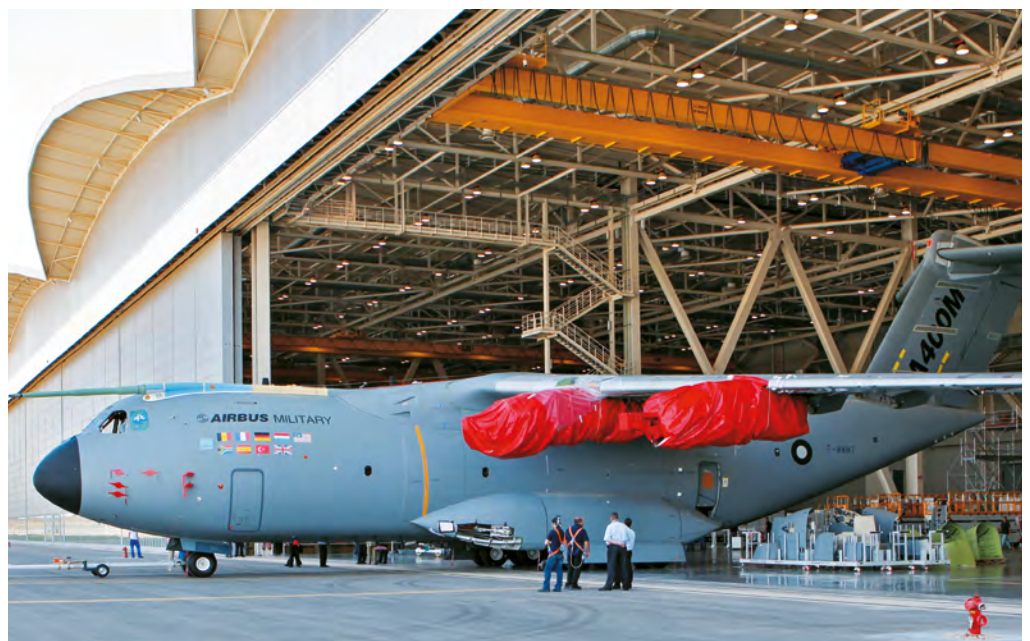
Other capacities and spans are available on request.

Up to 25 t in single and double girder options.

SINGLE GIRDER SUSPENDED CRANES



DOUBLE GIRDER SUSPENDED CRANES





Gantry Cranes

GH is a world leader in the design and manufacture of gantry cranes with a large number and variety of applications.

We adapt the manufacture of our gantry cranes to the needs and circumstances of each customer, always taking into account the type of work to be carried out and the load to be handled.

The experience acquired since 1958 endorses us as specialists in gantry and semi-gantry cranes.

Gantry cranes can be of two kinds of construction:

SINGLE GIRDER GANTRY CRANES

Single girder gantry cranes combine lightness and optimal use of space.

DOUBLE GIRDER GANTRY CRANES

Double girder gantry cranes offer greater stability for handling bulky loads, with a total weight that is handled through the optimisation of the structure. The preferred solution for high capacity gantries.





GANTRY CRANES

Gantry cranes, with legs on both sides, and running on floor level rails, are the solution for outdoor work, without needing to construct buildings.



LIFTING CAPACITY:
SINGLE GIRDER 1 - 20 t
DOUBLE GIRDER 1 - 63 t



SPAN:
UP TO 34.5 m.

Other capacities and spans are available on request.
TWIN HOIST (up to 200 t) and customised open winches (up to 400 t).

SINGLE GIRDER GANTRY CRANES



DOUBLE GIRDER GANTRY CRANES



SEMI-GANTRY CRANES

The semi-gantry cranes are supported by runways at different heights. The lower runway is on the ground, and the upper runway is on a runway beam attached to the structure of the building. The lower runway can be replaced by wheels of special material.

They are a very practical solution when it is not necessary to cover the entire width of the building.



LIFTING CAPACITY:

SINGLE GIRDER 1 - 20 t

DOUBLE GIRDER 1 - 63 t



SPAN:

UP TO 34.5 m.

Other capacities and spans are available on request.

TWIN HOIST (up to 200 t)
and customised open winches (up to 400 t).

SINGLE GIRDER SEMI-GANTRY CRANES



DOUBLE GIRDER SEMI-GANTRY CRANES





Wall travelling jib cranes

Wall travelling jib cranes are a good solution to handle several work stations without having to cover the entire width of the building and there are mobility limitations at ground level.

The design of these cranes can be adapted to specific layouts of runways in the building.



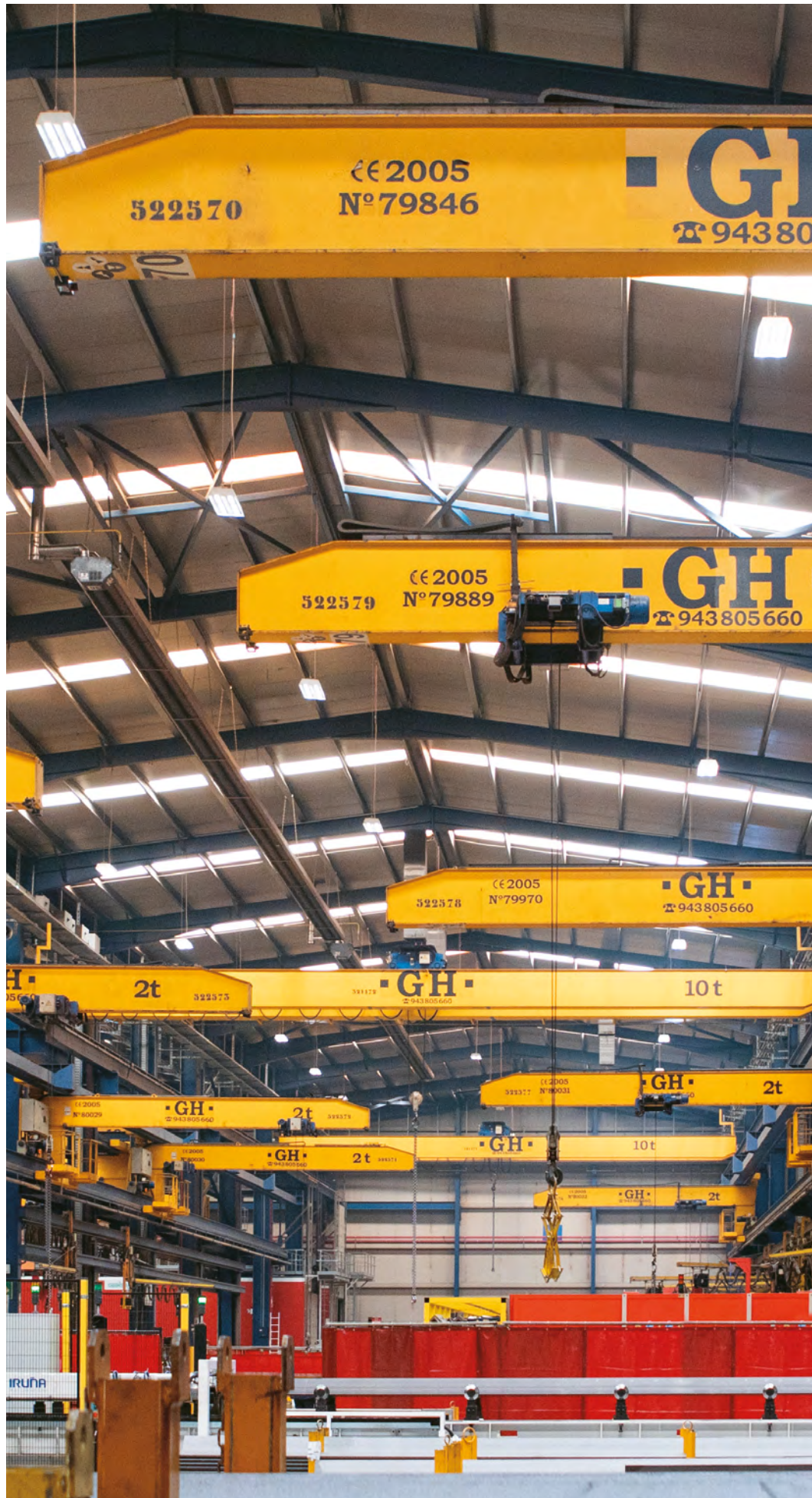
LIFTING CAPACITY:
1t - 5t



SPAN:
UP TO 8 m.

Other capacities and arm lengths are available on request.

Up to 10 t in single and double girder options.





SINGLE GIRDER WALL TRAVELLING CRANES



The simplest and lightest solution for wall travelling cranes.

DOUBLE GIRDER WALL TRAVELLING CRANES



Recommended for higher capacities, and when maximum stability of the load is required.

CRANES BY TYPE OF GIRDER

GH CRANES & COMPONENTS has optimised the design of the girders by combining the most advanced calculation programs and the experience of more than 65 years

manufacturing cranes. Depending on the type of crane, either box-type girders or I-beams are fitted.

BOX GIRDERS

Manufactured with steel plates welded together to achieve a rectangular section.

Lighter beams, which reduces the loads transmitted to the building.

The most suitable for high capacities and large spans.



I-BEAMS

Manufactured from commercial rolled profiles.

Easy manufacture and faster delivery.

The most suitable for low capacities and short spans.

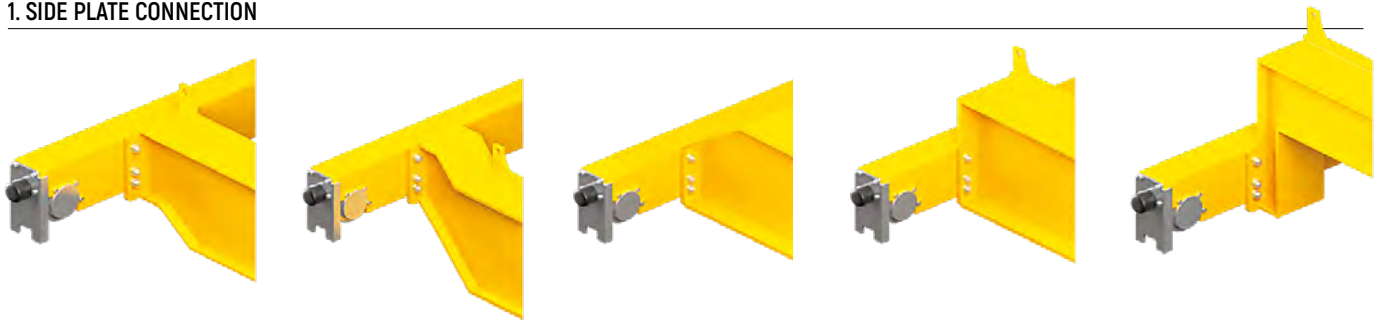


DIAGRAM OF CONNECTIONS BETWEEN THE GIRDERS AND END CARRIAGES

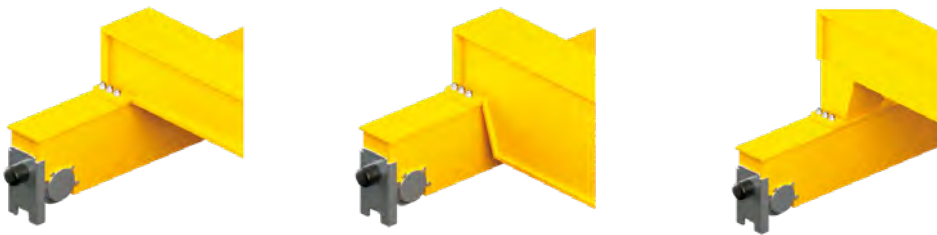
We have developed multiple connection solutions to ensure optimal use of space in the building.

OVERHEAD CRANES

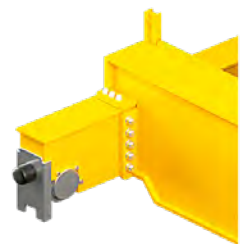
1. SIDE PLATE CONNECTION



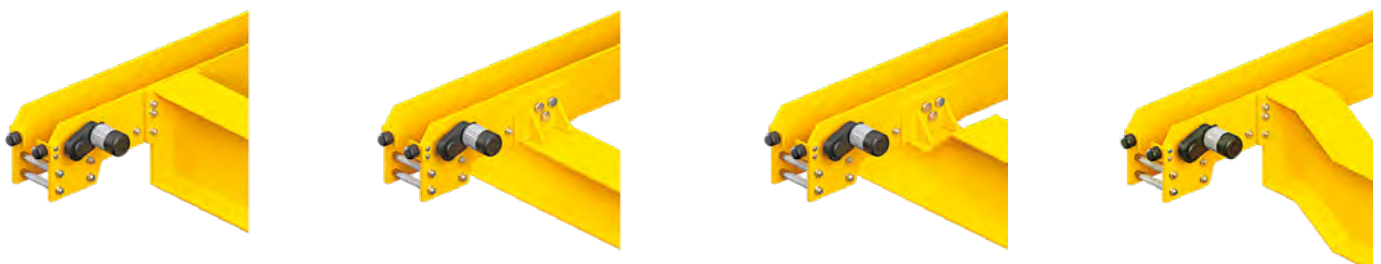
2. TOP PLATE CONNECTION



3. SIDE AND TOP PLATE CONNECTION



SUSPENDED CRANES



MOST COMMON ARRANGEMENTS

Based on our standard models, we make the necessary adjustments to adapt each crane to suit customer's application.



CRANE WITH TWO CRABS



CRANE WITH TWO HOISTS ON A CRAB



MAINTENANCE WALKWAYS. TROLLEY PLATFORMS



CRADLED CRAB



CRANE WITH DOUBLE END CARRIAGE (EIGHT WHEELS)



CRANE WITH ROTATING CRAB

STANDARD ENVIRONMENTAL CONDITIONS

The **standard working temperature range** of our cranes is from -20°C to $+40^{\circ}\text{C}$, both for indoor and outdoor use applications.

The **standard range of working altitude** of our cranes is from 0 to 1,000 metres above sea level.

OTHER POSSIBLE CONDITIONS.

Other temperatures and altitudes are possible by making minor modifications to the crane.

We can also adapt our cranes for use

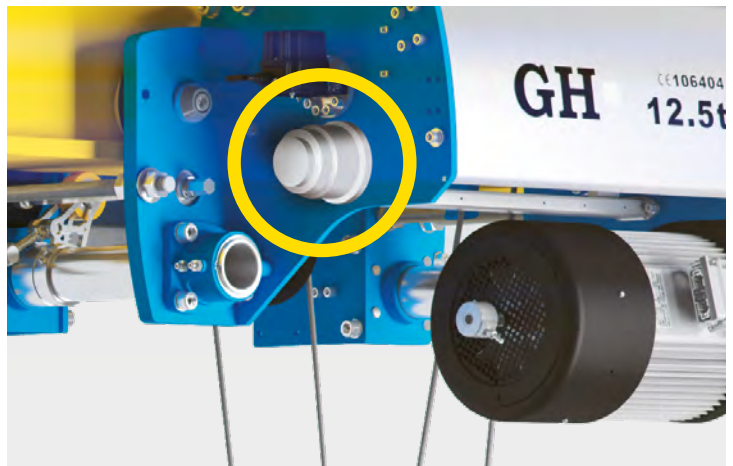
in environments classified as GALVANISED, MARINE, CORROSIVE, etc. including the necessary protections to qualify for categories C2, C3, C4, C5(I) or C5(M) according to UNE-EN ISO 12944-2.

GH OPTIONALS TO MAKE MACHINES MORE EXTRAORDINARY



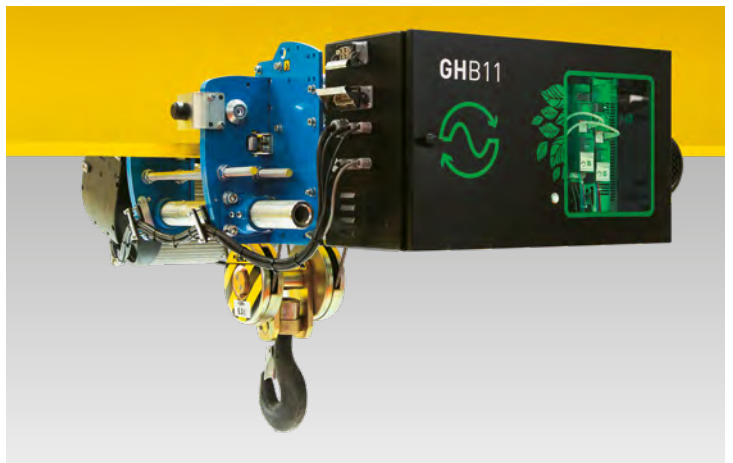
SECONDARY CENTRIFUGAL BRAKE

The secondary centrifugal brake is a system that works independently by means of a mechanical device that takes advantage of the centrifugal force generated by the falling of the load. It is mechanically coupled to the hoist drum by means of a pinion (brake) – crown (drum) system, to offer the greatest safety.



REGENERATIVE FREQUENCY INVERTER

The incorporation of regenerative modules in the frequency inverters allows us to recover the braking energy in the form of electricity that the crane returns to the grid. The advantages are energy savings and environmental sustainability.



INCOTANDEM

INCOTANDEM allows the handling of two cranes working in tandem, with effective synchronisation of movements. It makes it possible to control the movements of 2 cranes from 1 radio control with a lower radio frequency occupation. In addition, the number of equipment to install, commission and maintain is reduced.



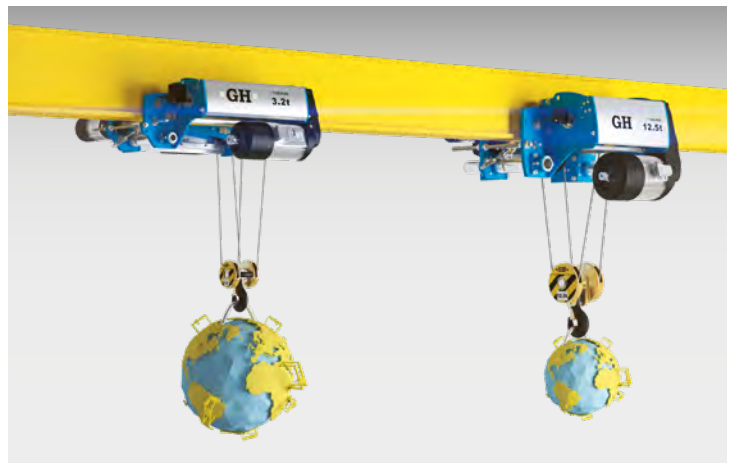
CORE+ STABILITY

CORE+ STABILITY helps to keep the loads stable at higher speeds. The system reduces the swaying of the trolley and crane movements produced by acceleration and braking, increasing productivity and work safety.



CORE+ SYNCHRO

CORE+ SYNCHRO handles loads easily and safely using 2 hoists [of the same or different capacities] installed on a single crane. It automatically maintains the distance between the 2 hooks, both horizontally and vertically, increasing productivity and safety, and without complications for the operator, since the system maintains the positions automatically.



HIGHER PRODUCTIVITY

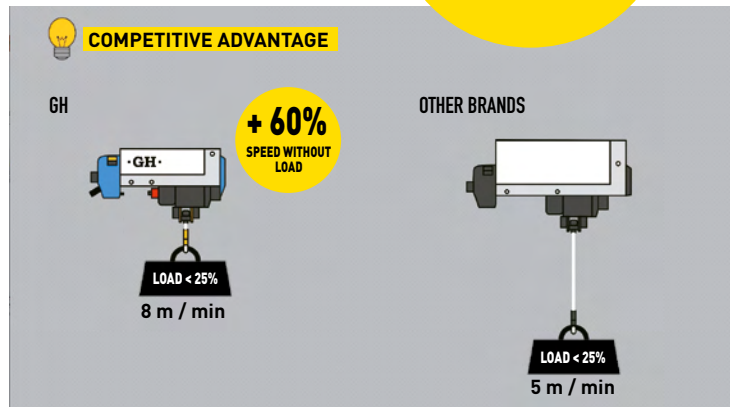
HIGHER PRODUCTIVITY FOR THE SAME PRICE.

At GH we know that producing more in less time is what our customers dream of. That's why we were the first to incorporate a frequency inverter in lifting as standard. This enables us to increase the speed without load by 60% and improve the precision. GH also provides higher standard travelling speeds than competition.

RESULT: 25% higher productivity*

FREQUENCY INVERTER IN LIFTING UP TO 20 t INCLUDED

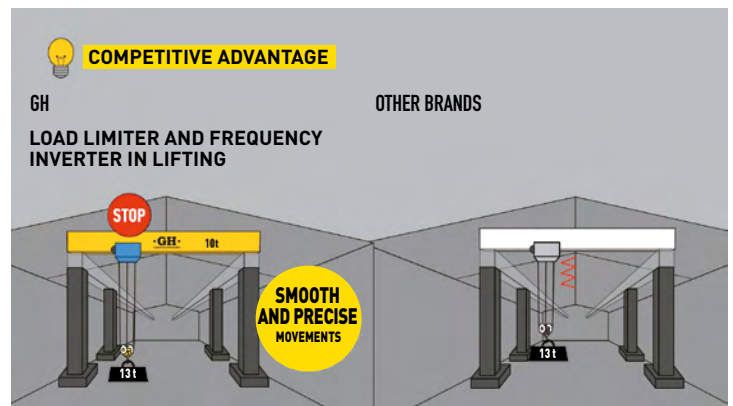
Optional 21-63 t



INCORPORATION OF A SERIES OF SYSTEMS THAT FACILITATE SAFE USE AND PROLONG THE LIFE OF THE MACHINES.

At GH we don't think that safety is an option. It's an obligation, as our machines have a frequency inverter in lifting for electric smooth braking, and an electromagnetic brake is only used for parking and emergency braking. An additional safety position for the lifting limit switch and the standard load limiter.

RESULT: higher safety and greater durability.

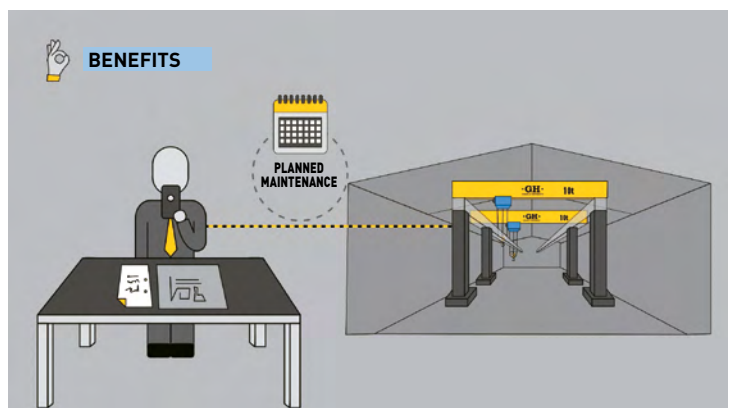


INTELLIGENT SYSTEMS AS STANDARD.

Preventing problems is much better than correcting them. That's why we have developed an intelligent control unit which is unique in the market. COREBOX. It includes functions of logging, connectivity, operational and safety.

In this way, the GH customer knows about the status of the machine in real time and can plan maintenance.

RESULT: higher productivity with lower costs.



*Productivity increase calculated in a typical cycle, with vertical travel of 2.5 metres and bridge travel of 40 metres.

SAFETY AS A MATTER OF PRINCIPLE

OR, SAFETY FROM THE BEGINNING. A GH crane doesn't start working until it has all the mandatory and extra safety elements in place.



ELECTRONIC LOAD LIMITER



EMERGENCY STOP PUSH-BUTTONS



LIMIT SWITCH



LIFTING LIMIT SWITCH



ANTI-COLLISION CELL



LIGHT AND ACOUSTIC SIGNAL

ACCESSORIES

We like to take care of every last detail. Our cranes, in addition to being robust and safe, have an extensive catalogue of accessories to provide them with even better performance.



RADIO CONTROL



INTEGRATED ACCESSORY MANAGEMENT



INTEGRATED ACCESSORY MANAGEMENT



LED LIGHTING



WEIGHT DISPLAY



STAINLESS STEEL CABINET



STORM LOCK



ANEMOMETER

Innovation and future

4.0

COMMITTED TO THE FUTURE

The lines of research in environmental sustainability, the monitoring of the machine to make it smart and the application of "industry 4.0" concepts to these processes, in addition to the use of the most advanced communication technologies, connect us with the future. And we are committed to this principle in a tireless drive to add value to the profit and loss account of all our customers.



CoreBox. The new generation of electronic load limiters that allows you to manage and control your cranes wherever you are.

COMMITTED TO SUSTAINABILITY

Our R&D strategy and our clear commitment to being a comprehensive manufacturer has led us to incorporate elements into our products that favour environmental sustainability and respect for energy efficiency standards, without detriment to our effectiveness and ability to provide added value to all of our customers.

The recovery of energy to be reused and the new ways of operating our products based on clean energy put us at the forefront in terms of our commitment to sustainability.

**ENVIRONMENTAL
MANAGEMENT
SYSTEM CERTIFIED
ACCORDING TO:
EN-ISO-14001**



Regenerative frequency inverters. Energy savings, cost savings and environmental sustainability.



1 **Web configurator** that allows us to provide a crane quote, anywhere in the world, at any time.



2 **Tools for calculating structures using the finite element method.**



3



Metrology laboratory: for dimensional control of the parts.

Real-time monitoring of the manufacturing status.

Lasertracker: Dimensional control of the cranes.

4 **Once the crane is in service:**



With the **"Service Mobile" app** we manage preventive and corrective maintenance activities.



Customer Portal. A platform with comprehensive, up-to-date information about the crane, accessible by GH and the customer.



Remote monitoring of the crane's operational data in real time. Making predictive and corrective maintenance more effective.



COMMITTED TO THE EFFICIENCY OF THE CUSTOMER'S COMPREHENSIVE MANAGEMENT

From the moment the quote is generated, the customer becomes an essential partner in our entire process.



GH Group

6 BUSINESS UNITS

HISTORY

GH CRANES & COMPONENTS is a family business with more than 65 years of experience in the market, having become one of the world leaders in the lifting sector (hoists, overhead cranes, automotive gantries, transfer carts) which operates around the world with more than 850 employees. The headquarters are in Spain, and the company has 10 industrial plants distributed throughout the world in the markets considered to be of greatest strategic importance.

The industrial development of GH CRANES & COMPONENTS has been accompanied by the development of the after-sales service. This ensures that each customer can enjoy our cranes every day for many years.



STANDARD SOLUTIONS



SPECIAL SOLUTIONS



COMPREHENSIVE MANUFACTURERS OF COMPONENTS AND MECHANISMS



GH MOTION MOBILE SYSTEMS



GLOBAL SERVICE



EX SOLUTIONS
ATEX
IECEX

GH PRODUCTS

- / Overhead cranes
- / Gantry cranes
- / Wall travelling jib cranes
- / Transfer carts
- / Hoists: wire rope and chain

- / Jib cranes: industrial and lightweight
- / Process cranes with open winch
- / Automotive gantry cranes: marine and industrial

- / Dry docks
- / Rails and runway structures
- / Electricity supply system
- / Crane components
- / Lifting accessories

+125,000
CRANES SOLD WORLDWIDE

MORE THAN 65 YEARS IN THE LIFTING MARKET. EXPERIENCE IS OUR GREATEST ASSET.



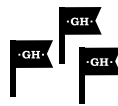
MORE AND MORE PLACES, CLOSER AND CLOSER TO OUR CUSTOMERS



10 MANUFACTURING PLANTS IN THE STRATEGIC MARKETS



DIRECT PRESENCE WITH OUR OWN COMMERCIAL SUBSIDIARY **IN 15 COUNTRIES**



COMMERCIAL PRESENCE IN MORE THAN **70 COUNTRIES** WITH OUR LOCAL PARTNERS

IN THE **TOP TIER 5**

OF CRANE MANUFACTURERS WORLDWIDE



WE ARE THE LEADERS IN PORTUGAL AND SPAIN

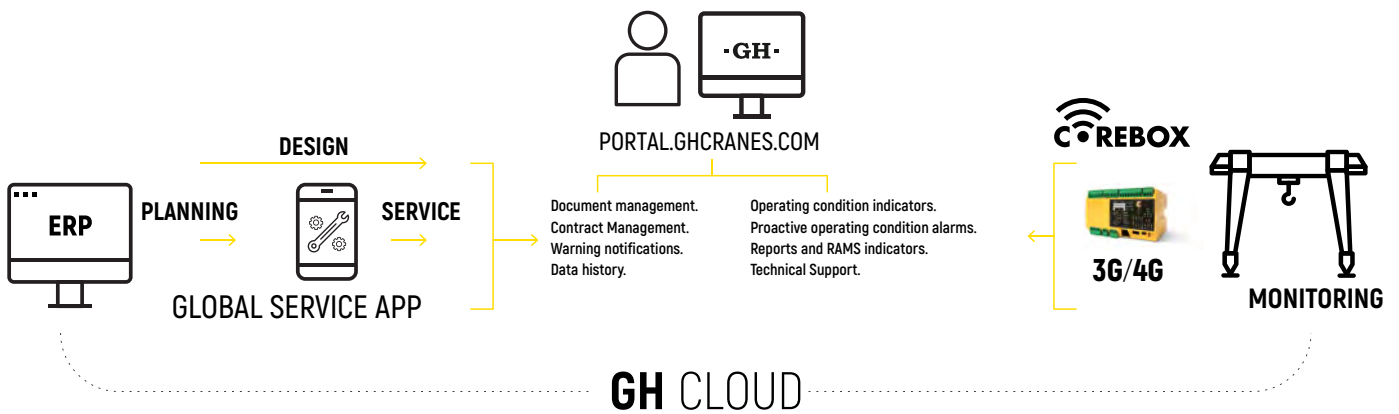
Locally based service

SERVICE ANYWHERE IN THE WORLD



Our capacity as comprehensive manufacturers of all our products has positioned us as the market leaders. This is complemented by the development of a wide service network to respond to all the needs of our customers.

GH CRANES & COMPONENTS therefore has a large group of professionals prepared to manage service anywhere in the world.



QUALIFIED PROFESSIONALS

An outstanding team of staff with many years of experience in a multitude of sectors make our projects possible.

Our Service is a consequence of the commitment made to our customers, for whom we aim to minimise downtime by acting before problems occur with preventive and predictive maintenance, using the latest technology 4.0.





www.ghcranes.com

CE 2009
N°91642

-GH-
2943805660

25/12,5t

www.ghcranes.com

-GH-
CRANES & COMPONENTS